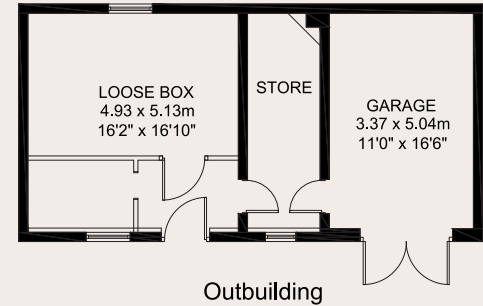


GROSS INTERNAL AREA
 HOUSE 216 SQ METRES - 2,324 SQ FEET
 OUTBUILDING 53 SQ METRES - 572 SQ FEET
 FOR IDENTIFICATION ONLY - NOT TO SCALE



General

Services: All mains services are connected. Oil fired central heating.

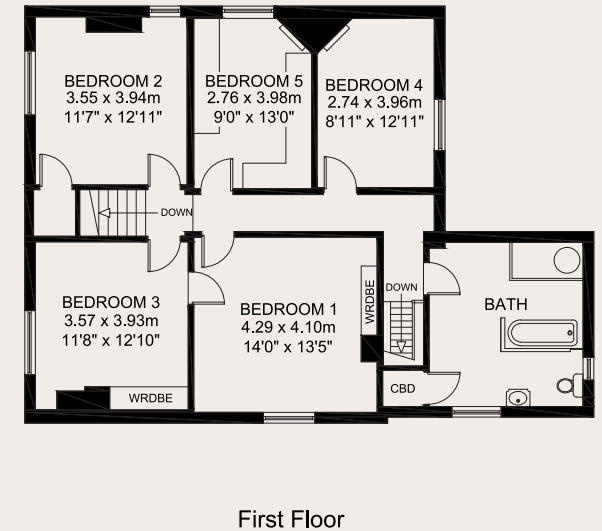
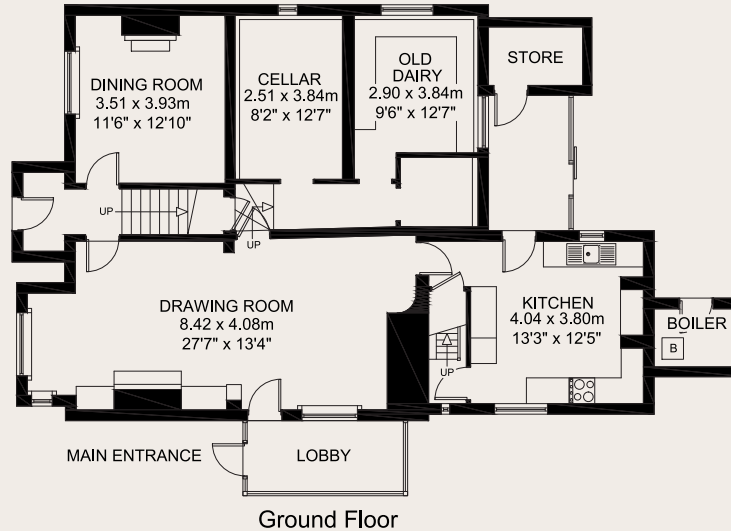
Postcode: SG4 7NE.

Local authority: North Hertfordshire District Council, Gernon Road, Letchworth, Hertfordshire, SG6 3JF. Tel (01462) 474000.

Directions

Traveling north on the A1(M) leave at Junction 8, at the roundabout take the 1st exit onto A602 (signposted Hitchin) after 2 miles turn left on to Black horse lane at the end turn left on to London road. Pound farm can be found on the left handside.

Viewing strictly by appointment through Strutt & Parker LLP



Tel: 01582 764343

49 High Street, Harpenden,
 Hertfordshire AL5 2SP

e-mail: harpenden@struttandparker.com

www.struttandparker.com

If you require this publication in an alternative format, please contact Strutt & Parker LLP on tel 01582 764343. **IMPORTANT NOTICE** Strutt & Parker LLP for themselves and for the Vendors of this property, whose agents they are, give notice that: 1. The particulars are intended to give a fair and substantially correct overall description for the guidance of intending purchasers and do not constitute part of an offer or contract. Prospective purchasers and lessees ought to seek their own professional advice. 2. All descriptions, dimensions, areas, reference to condition and necessary permissions for use and occupation and other details are given in good faith, and are believed to be correct, but any intending purchasers should not rely on them as statements or representations of fact, but must satisfy themselves by inspection or otherwise as to the correctness of each of them. 3. No person in the employment of Strutt & Parker LLP has any authority to make or give any representations or warranty whatever in relation to this property on behalf of Strutt & Parker LLP, nor enter into any contract on behalf of the Vendor. 4. No responsibility can be accepted for any expenses incurred by intending purchasers in inspecting properties which have been sold, let or withdrawn. Photographs taken September 2009. Particulars prepared September 2009. **MEASUREMENTS AND OTHER INFORMATION** All measurements are approximate. While we endeavour to make our sales particulars accurate and reliable, if there is any point which is of particular importance to you, please contact this office and we will be pleased to check the information for you, particularly if contemplating travelling some distance to view the property. Re-order No. 105348/09/2009